

ANNUAL REPORT FOR 2006
ANALYSIS OF THE EMBARKATION / DISEMBARKATION DATA FROM ALL
APPROVED ENTRY / EXIT POINTS

Embarkation and disembarkation cards that were summarized on the GIS form 14 for the year 2006 have been thoroughly analyzed below:

In all 528948 persons embarked and 508199 disembarked for the year through the approved entry / exit points. 33% of the arrival and 37% of the departure represents Ghanaian migrants, Ecowas migrants recorded 26% arrival and 23% departure and Other migrants indicated 41% arrival and 40% departure of the total embarkation and disembarkation. From the above figures one may anticipate that arrival figures for non-Ghanaians exceed the departure.

The 1st quarter of the year recorded 23% of total arrival and 23% of the total departure. There was no change in arrival for the 2nd quarter; however, there was a 1% increase in departure. The 3rd quarter brought about a sharp increase in both arrival and departure by 5% each over the 1st quarter. Finally, the 4th quarter illustrated 26% arrival and 25% departure of the total figure analyzed. Comparatively, there was a 2% decrease in arrival and 3% decrease in departure between the 3rd and 4th quarters of the year.

During analysis, the collected data were categorized into the four major (KIA, AFLAO, ELUBO and PAGA) and other entry/ exit points (all stations apart from the four major stations). KIA recorded the highest figures for the year representing 80% of total arrival and 78% of total departure, followed by Aflao with 8% arrival and 9% departure. Elubo followed closely with 8% arrival and 8% departure where as Paga had 2% of arrival and 2% of departure. Finally, the Other entry / exit points demonstrated 2% arrival and 3% departure.

SUMMARY

- (i) July and August recorded the highest arrival and departure respectively.
- (ii) July and August recorded the highest arrival and departure respectively.
- (iii) February and May gave the lowest departure and arrival respectively.
- (iv) Ghanaian migrants indicated 46% arrival and 54% departure.
- (v) Ecowas migrants shown 52% arrival and 48% departure.
- (vi) Other nationals illustrated equal percentage of 50.
- (vii) Annual arrival and departure recorded 49% and 51% respectively.

- (viii) July and August recorded the highest arrival and departure respectively.
- (ix) February and May gave the lowest departure and arrival respectively.
- (x) Ghanaian migrants indicated 46% arrival and 54% departure.
- (xi) Ecowas migrants shown 52% arrival and 48% departure.
- (xii) Other nationals illustrated equal percentage of 50.
- (xiii) Annual arrival and departure recorded 49% and 51% respectively.

1ST QUARTER 2006 NATIONAL ARRIVAL & DEPARTURE OF MIGRANTS

MONTH	GHANAIA N MIGRANTS		ECOWAS MIGRANTS		OTHER MIGRANTS		TOTAL	
	ARRIVAL	DEPARTURE	ARRIVAL	DEPARTURE	ARRIVAL	DEPARTURE	ARRIVAL	DEPARTURE
JANUARY	13646	16009	10764	8141	17767	19519	42177	43669
FEBRUARY	10331	13918	8977	9298	16525	14025	35833	37241
MARCH	14059	14711	8925	10296	18737	16707	41721	41714
TOTAL	38036	44638	28666	27735	53029	50251	119731	122624

TABLE 1

1ST QUARTER 2006 NATIONAL ARRIVAL& DEPARTURE OF MIGRANTS

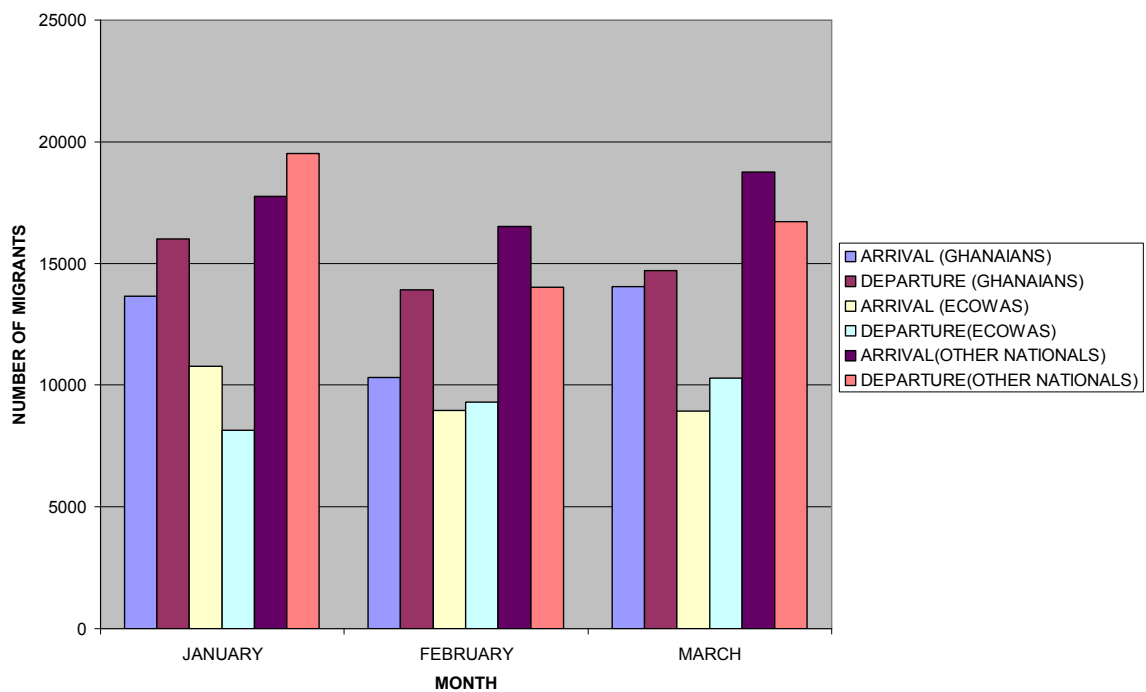


FIG.1

2ND QUARTER 2006 NATIONAL ARRIVAL & DEPARTURE OF MIGRANTS

MONTH	GHANAIAN MIGRANTS		ECOWAS MIGRANTS		OTHER MIGRANTS		TOTAL	
	ARRIVAL	DEPARTURE	ARRIVAL	DEPARTURE	ARRIVAL	DEPARTURE	ARRIVAL	DEPARTURE
APRIL	12178	14561	10592	9980	15246	17147	38016	41688
MAY	10870	17021	7702	11117	14523	16315	33095	44453
JUNE	14897	16109	11173	9545	19381	16674	45451	42328
TOTAL	37945	47691	29467	30642	49150	50136	116562	128469

TABLE 2

2ND QUARTER 2006 NATIONAL ARRIVAL & DEPARTURE OF MIGRANTS

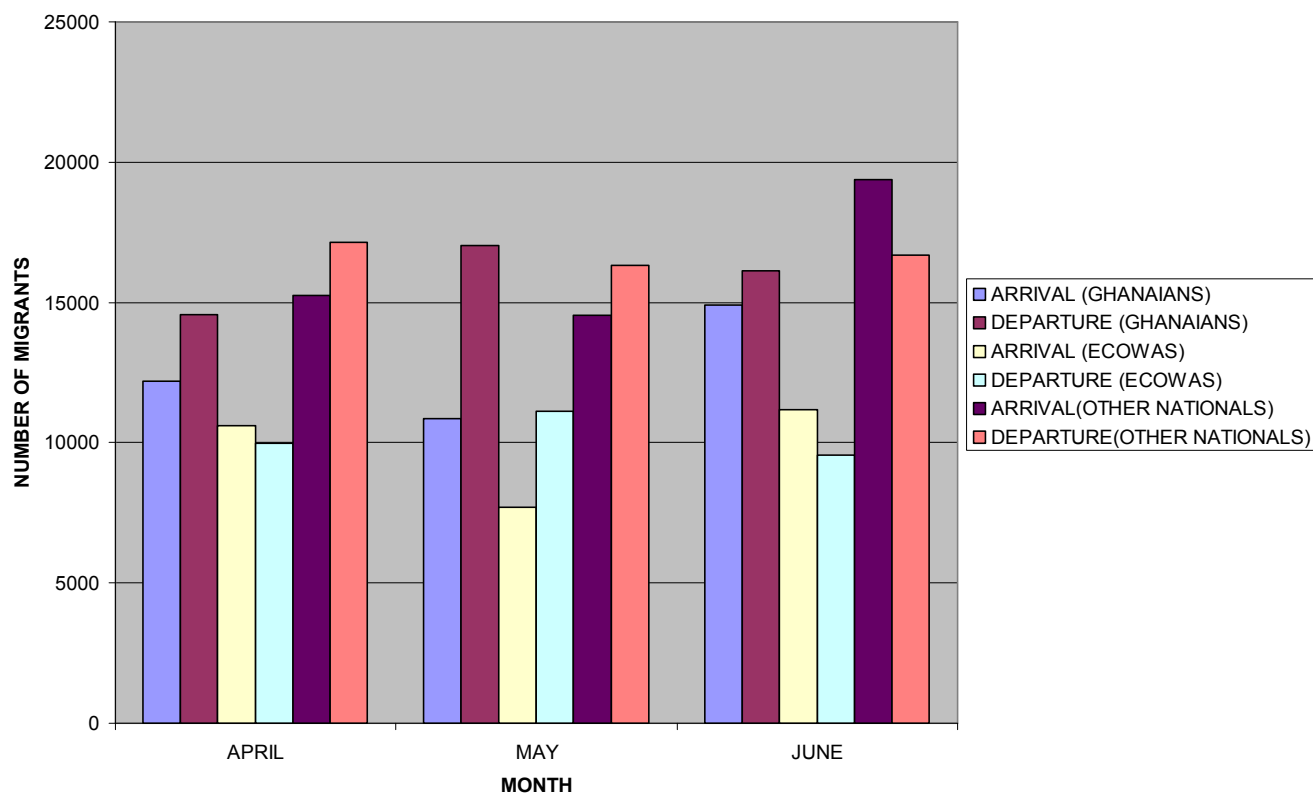


FIG. 2

3RD QUARTER 2006 NATIONAL ARRIVAL & DEPARTURE OF MIGRANTS

MONTH	GHANAIAN MIGRANTS		ECOWAS MIGRANTS		OTHER MIGRANTS		TOTAL	
	ARRIVAL	DEPARTURE	ARRIVAL	DEPARTURE	ARRIVAL	DEPARTURE	ARRIVAL	DEPARTURE
JULY	17217	14309	16022	11031	23337	16336	56576	41676
AUGUST	15265	20128	12238	9099	17076	26714	44579	55941
SEPTEMBER	13794	19886	11253	11889	15279	17872	40326	49647
TOTAL	46276	54323	39513	32019	55692	60922	141481	147264

TABLE 3

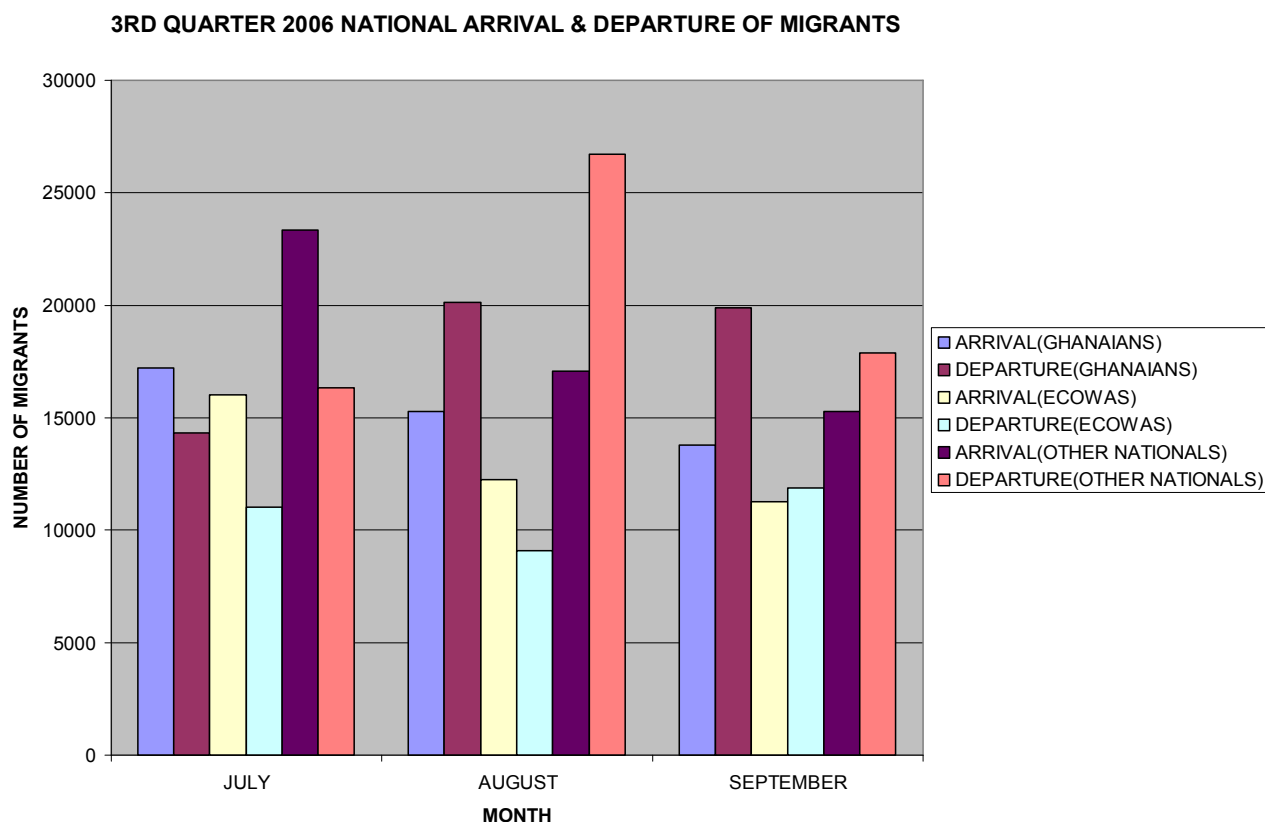


FIG. 3

4TH QUARTER 2006 NATIONAL ARRIVAL & DEPARTURE OF MIGRANTS

MONTH	GHANAIAN MIGRANTS		ECOWAS MIGRANTS		OTHER MIGRANTS		TOTAL	
	ARRIVAL	DEPARTURE	ARRIVAL	DEPARTURE	ARRIVAL	DEPARTURE	ARRIVAL	DEPARTURE
OCTOBER	14203	16202	9925	9598	16101	15455	40229	41255
NOVEMBER	12932	14611	10160	9900	16180	16284	39272	40795
DECEMBER	19065	16379	11596	13327	20263	18835	50924	48541
TOTAL	46200	47192	31681	32825	52544	50574	130425	130591

TABLE 4

4TH QUARTER 2006 NATIONAL ARRIVAL & DEPARTURE OF MIGRANTS

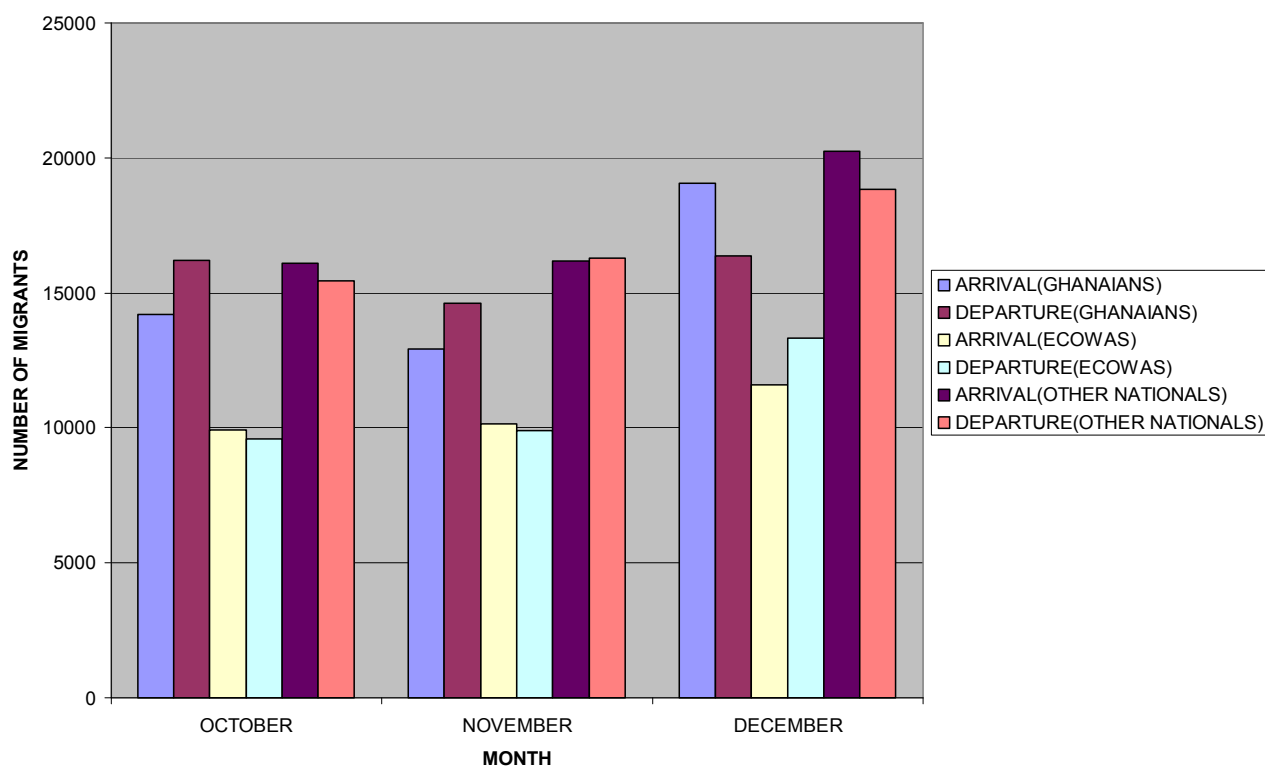


FIG. 4

TABLE SHOWING 2006 TOTAL NATIONAL ARRIVAL & DEPARTURE OF GHANAIAN MIGRANTS

ARRIVAL	DEPARTURE
290714	340496

TABLE 5

2006 TOTAL NATIONAL ARRIVAL & DEPARTURE OF GHANAIAN MIGRANTS

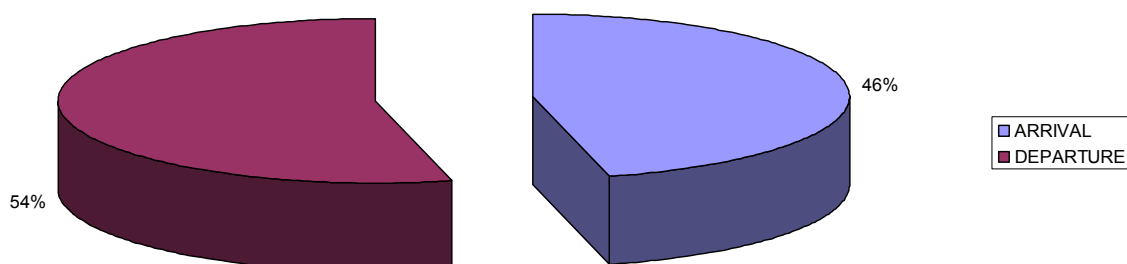


FIG.5

TABLE SHOWING 2006 TOTAL NATIONAL ARRIVAL & DEPARTURE OF ECOWAS MIGRANTS	
ARRIVAL	DEPARTURE
226973	213617

TABLE 6

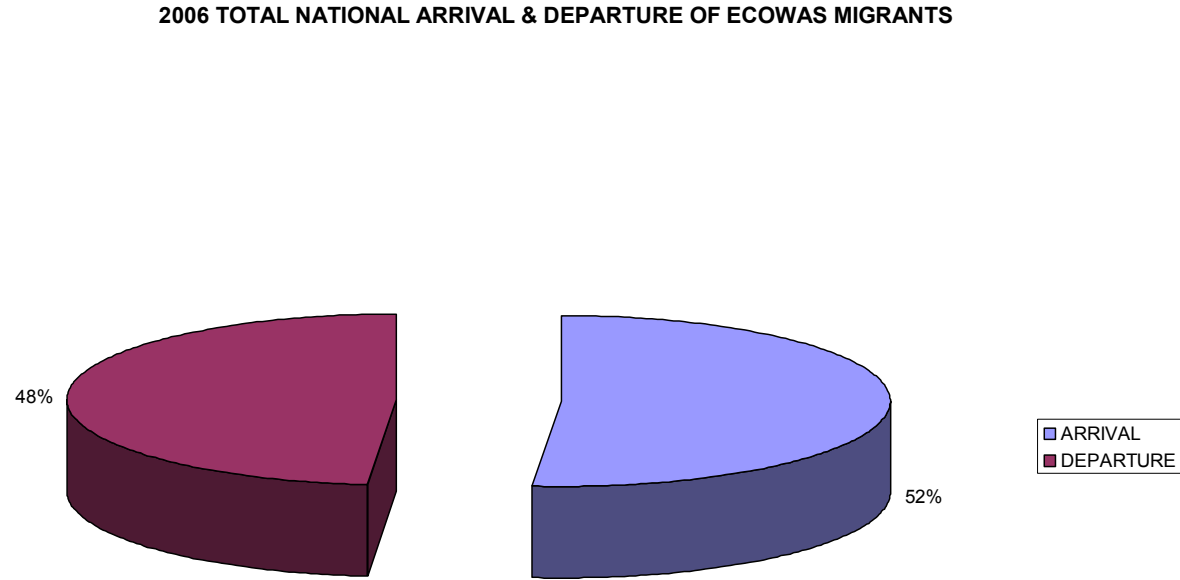


FIG. 6

TABLE SHOWING 2006 TOTAL NATIONAL ARRIVAL & DEPARTURE OF OTHER MIGRANTS

OTHER NATIONALS	
ARRIVAL	DEPARTURE
368286	373192

TABLE 7

2006 TOTAL NATIONAL ARRIVAL & DEPARTURE OF OTHER MIGRANTS

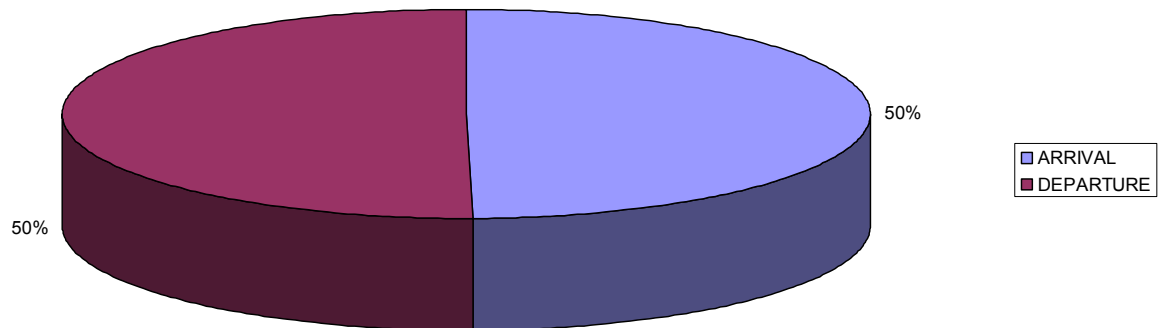


FIG. 7

TABLE SHOWING 2006 TOTAL NATIONAL ARRIVAL & DEPARTURE OF MIGRANTS	
ARRIVAL	DEPARTURE
508199	528948

TABLE 8

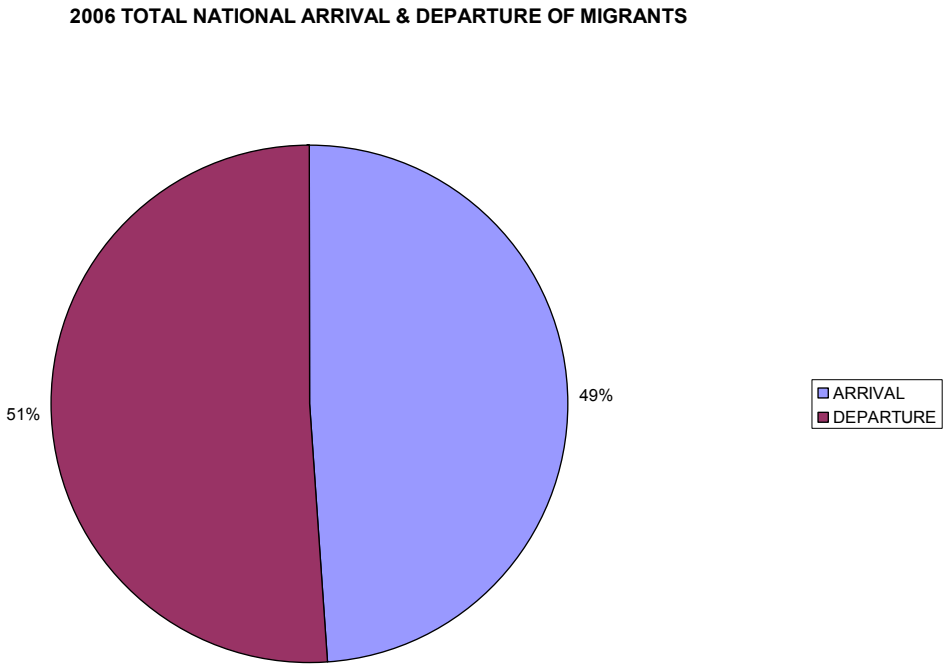


FIG. 8

TABLE SHOWING 2006 NATIONAL ARRIVAL & DEPARTURE OF GHANAIAI MIGRANTS PER MONTH

MONTH	ARRIVAL	DEPARTURE
JANUARY	13646	16009
FEBRUARY	10331	13918
MARCH	14059	14711
APRIL	12178	14561
MAY	10870	17021
JUNE	14897	16109
JULY	17217	14309
AUGUST	15265	20128
SEPTEMBER	13794	19886
OCTOBER	14203	16202
NOVEMBER	12932	14611
DECEMBER	19062	16360
TOTAL	168454	193825

TABLE 9

2006 TOTAL NATIONAL ARRIVAL & DEPARTURE OF GHANAIAI MIGRANTS PER MONTH

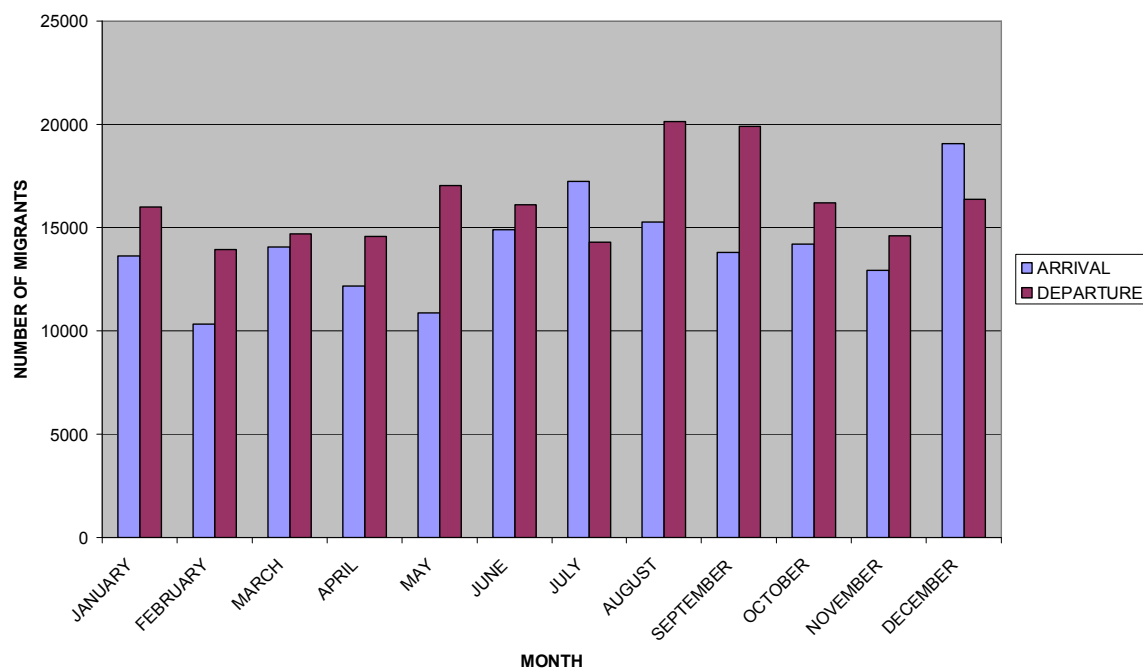


FIG. 9

TABLE SHOWING 2006 NATIONAL ARRIVAL & DEPARTURE OF ECOWAS MIGRANTS PER MONTH

MONTH	ARRIVAL	DEPARTURE
JANUARY	10764	8141
FEBRUARY	8977	9298
MARCH	8925	10296
APRIL	10592	9980
MAY	7702	11117
JUNE	11173	9545
JULY	16022	11031
AUGUST	12238	9099
SEPTEMBER	11257	11889
OCTOBER	9925	15259
NOVEMBER	10160	9900
DECEMBER	11596	13327

TABLE 10

2006 TOTAL NATIONAL ARRIVAL & DEPARTURE OF ECOWAS MIGRANTS PER MONTH

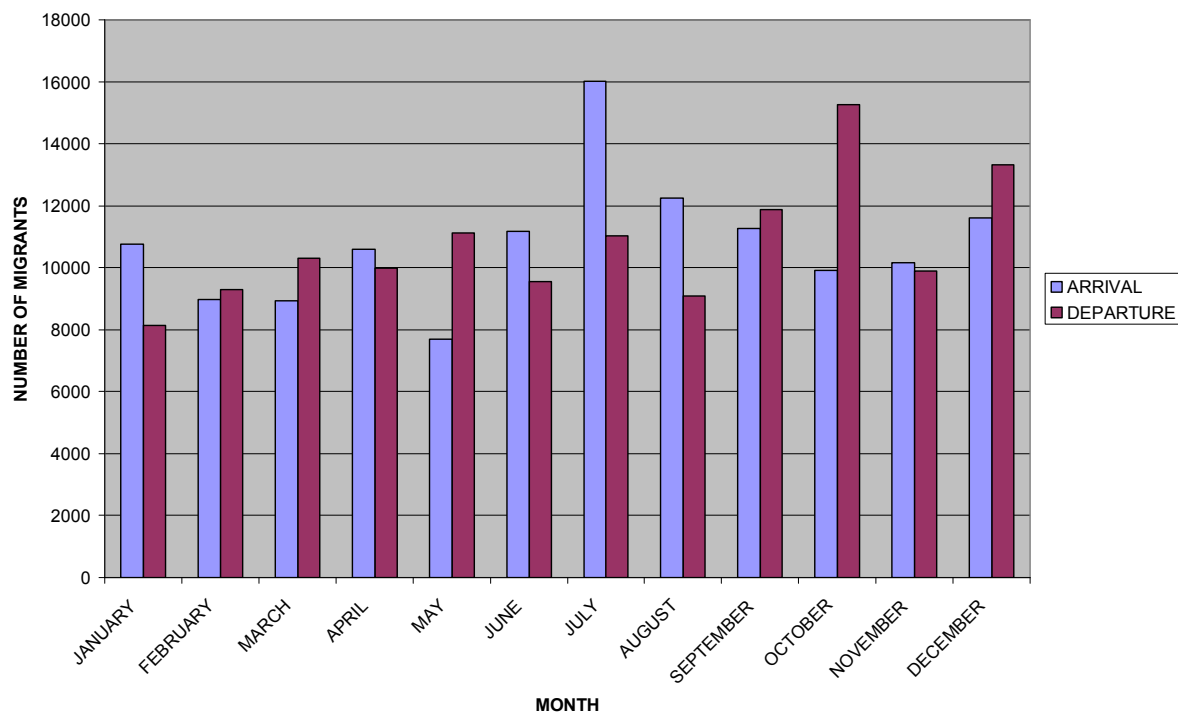


FIG. 10

TABLE SHOWING 2006 NATIONAL ARRIVAL & DEPARTURE OF MIGRANTS AT THE FOUR (4) MAJOR AND OTHER ENTRY & EXIT POINTS

SECTORS	GHANAIAN MIGRANTS		ECOWAS MIGRANTS		OTHER MIGRANTS		TOTAL	
	ARRIVAL	DEPARTURE	ARRIVAL	DEPARTURE	ARRIVAL	DEPARTURE	ARRIVAL	DEPARTURE
KIA	152611	163833	69330	64360	183501	184289	405442	412482
AFLAO	5263	11543	17302	17992	17718	19150	40283	48685
ELUBO	5896	8826	34058	33299	3263	2394	43217	44519
PAGA *	1864	3370	3720	3040	2632	2293	8216	8703
OTHER POINTS	2823	6272	4917	4530	3301	3757	11041	14559
TOTAL	168457	193844	129327	123221	210415	211883	508199	528948

* AUGUST-NOVEMBER (NO DATA)

2006 TOTAL NATIONAL ARRIVAL & DEPARTURE OF MIGRANTS AT THE FOUR (4) MAJOR AND OTHER ENTRY/ EXIT POINTS

